

MODEL GO 15

Small in size and light on weight, smooth and quiet in operation, tough and durable in construction, this model is recommended to clean any kitchen or shower drain effectively.

Gorlitz Model GO 15, with a total weight of only 28 lbs., is our smallest sink cleaning machine. A totally enclosed aluminum drum equipped with a specially designed inner cone and distributor arm reduces the possibility of cables escaping and kinking. The GO 15 contains a specially built high torque capacitor start reversible motor. The 265 rpm cable rotation provides better and faster cleaning of sink lines from 1 1/4" to 2" in diameter up to 50 feet long. This model is also equipped with a flexible trunk to assist the operator in guiding the cable into any drain opening.



ACCESSORIES

Allen Wrenches	1/4" x 35' Cable
For/Rev Switch	GFCI

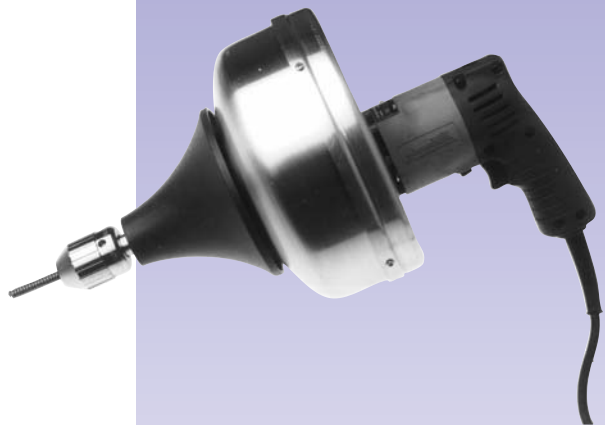
SPECIFICATIONS

1/6 HP Ball Bearing Motor
Cable Rotation: 265 RPM
Pipe Size: 1 1/4" to 2" Dia.
Maximum Pipe Length: 50 Feet
Dimensions: 16" L x 10" W x 14" H
Net Weight: 28 LBS

The Gorlitz Model GO 15 is shown complete with protective rubber feet and watertight neoprene rubber drum sleeve. This machine is attractively powder-coated in red, black or blue.

MODEL GO 31

Gorlitz Model GO 31, the "Handygun", is our only hand held sink and drain cleaning machine. Conveniently constructed with a pistol grip, keyless chuck, and trigger action, the 1.60 amp, 120V reversible motor has a variable speed control from 0-450 RPM's to quickly open clogged drains. Enclosed in an aluminum drum holding up to 50 feet of 5/16" cable, this machine cleans drain lines from 1 1/4" to 2" in diameter up to 50 feet long. Our "Handygun" is also available as a cordless model No. GO 31A.



The Gorlitz Model GO 31 is lightweight (13 lbs), easy to use and comes furnished with a standard 5/16" x 25" right-hand wound cable.